

## AVANTI

A fireplace and design for modern furnishings and numerous possibilities.

Avanti has all the advantages of a tiled stove. It is efficient and stores a lot of heat, which is pleasantly released into the house – perfect for the well-insulated new homes built today.

### Technical data

Article no. G860, G861

CE marking: EN 15250

Height: 2430 mm (customised to your needs)

Weight: 1400 kg

Dimensions (base): 960 x 600 mm

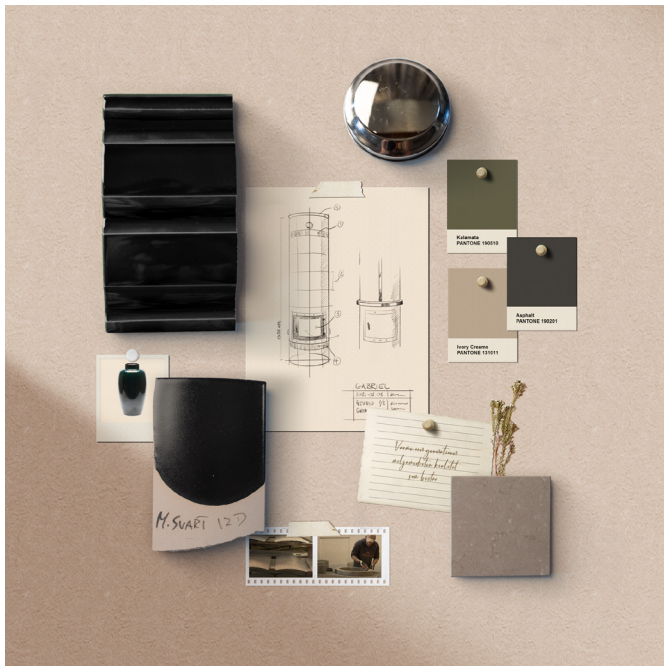
Energy efficiency: 92.4%

Nominal heat output (kW): 4.5

Heat retention: Up to 24 hours

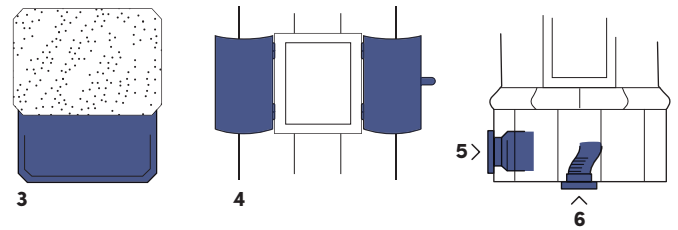
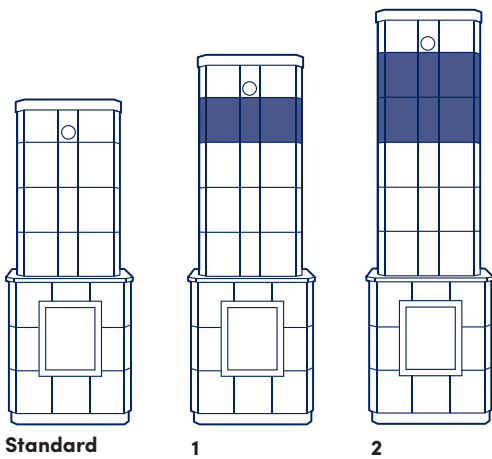
Connection: Rear or top flue connection





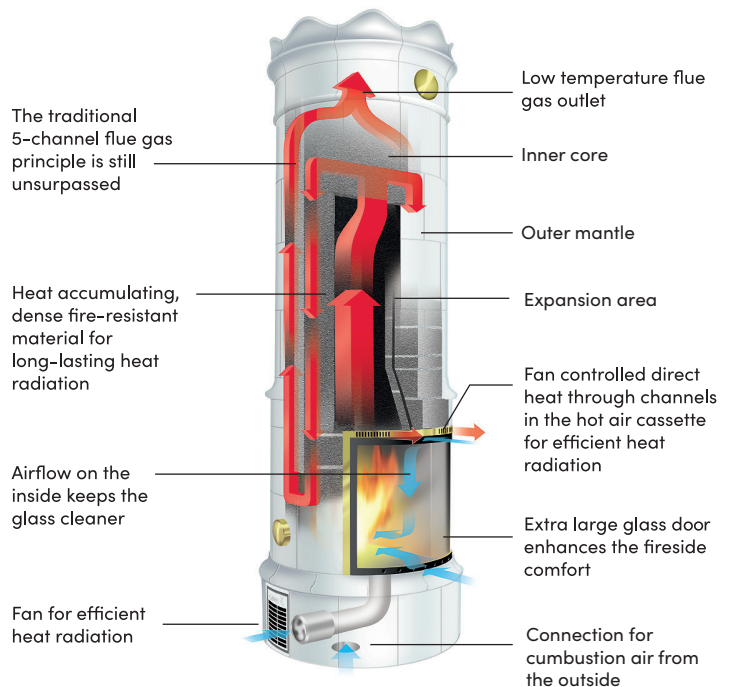
Avanti is manufactured by hand in Timmernabben and is one of a kind, custom-made for you.

You can add your personal touch to the design and adapt it to your project through the various materials available on the ledge, tiles and trims.



**Optional**

- 1 - Elevation - extra course (330 mm)
- 2 - Elevation - 2 extra course
- 3 - Spark protection plate, brass or stainless  
Stainless steel instead of brass
- 4 - Doors (brass /stainless)
- 5 - Fan  
Control for fan
- 6 - Supply air (connection from outside)



Want to save a piece of paper?  
Scan the qr-code for a digital product sheet.